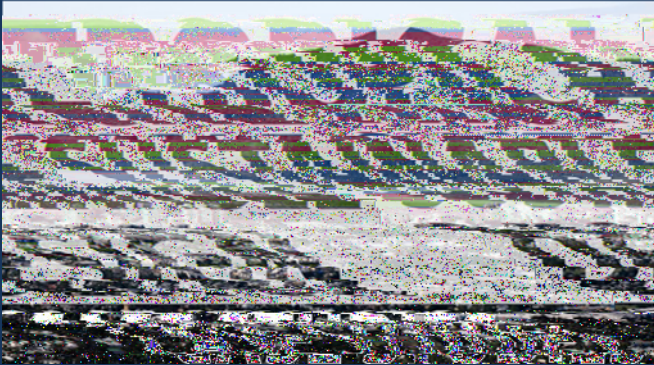


RPS Conics Building

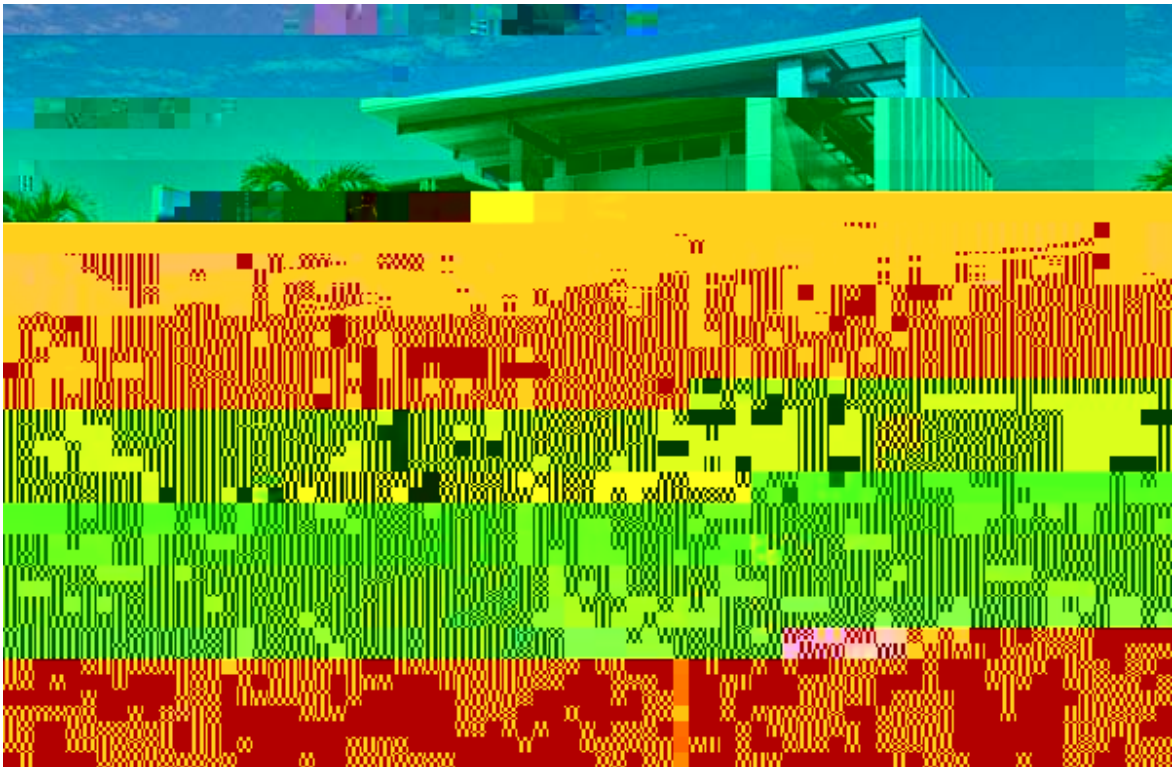
Project type: Commercial



Location: 135 Abbott Street, Cairns, Queensland, Australia
Year Completed: 2009

- x Dilapidated commercial structure transformed into modern professional offices
- x Total Gross Floor Area: 3,300m²
- x 5 star NABERS energy efficiency Variable Refrigerant Volume (VRV) air conditioning system
- x Energystar rating is 4 Star GreenStar Office Design v2 Certified Rating ('Best Practice')

OVERVIEW



The key focus of this project was to transform an existing dilapidated commercial headquarters for the

growing RPS Group, previously housed over several sites. The existing structure was re-used along with careful façade design, sun shading and an efficient floor plan resulting in an energy efficient design respecting the tropical environment.

The problem of connecting the levels was overcome by inserting a central staircase and lift to the centre of the building. New balconies and awnings were created along the two exposed faces giving staff access to fresh air and to provide shading to the elevations to enhance energy efficiency.

New suspended lighting was installed to exposed concrete soffit ceilings. Work stations conform to green star levels of illumination, and lights and motorised blinds were connected to the building's new C Bus system. A new VRV air conditioning system was installed to maximise the sustainability of the building, and new water saving plumbing fixtures were integrated into the new hydraulic system.

Internal finishes were chosen from recycled, environmentally sustainable or low volatile organic compound (VOC) materials.

The Building has been awarded a 4 Star Green Star Office Design v2 Certified Rating, which represents 'Best Practice'.

PLANNING AND MANAGEMENT

The design team comprised of specialists with

installed to all levels and old lifts removed. To reflect the Green Star rating it

PROJECT TEAM

Base building architect/ designer: CA Architects
Interior designer: DesignAqua
Civil engineer (Site and traffic)/ Structural engineer: CMG Engineers
Services engineer: WSP (mechanical & electrical), H2O (hydraulics)
Project manager: HSVision
Energy efficiency rating consultant: WSP
Green Star rating consultant: Conics (now RPS)
Builder: HSVision Group

For more information visit: www.jcu.edu.au/tsd
www.greenbuild.com.au

Information and photos are supplied by the project owners and designers. The Tropical Green Building Network and James Cook University (the administrators) cannot guarantee the accuracy or authenticity of this content. Produced July 2014



B

C

B

F