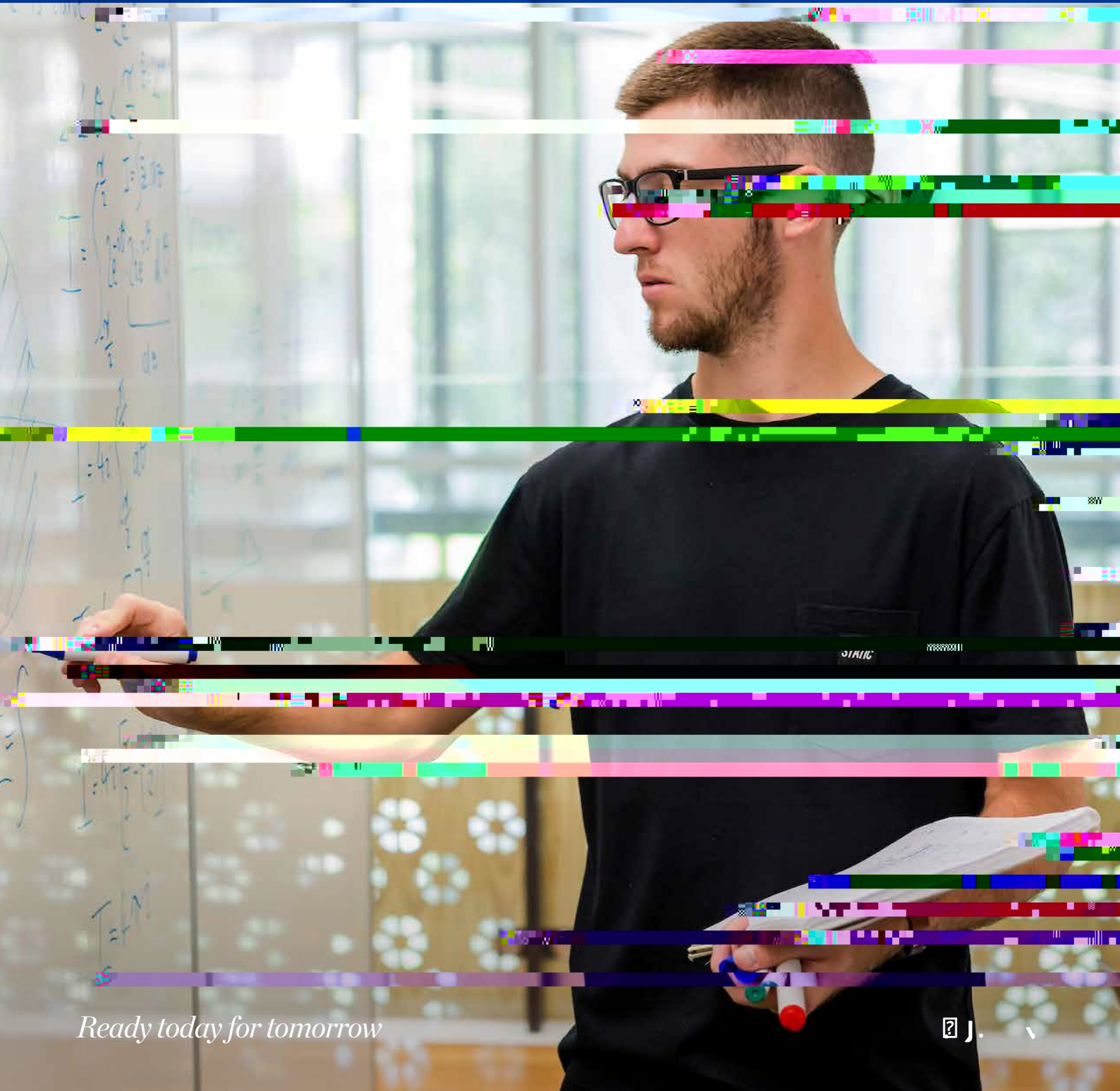


B

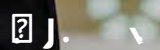
C



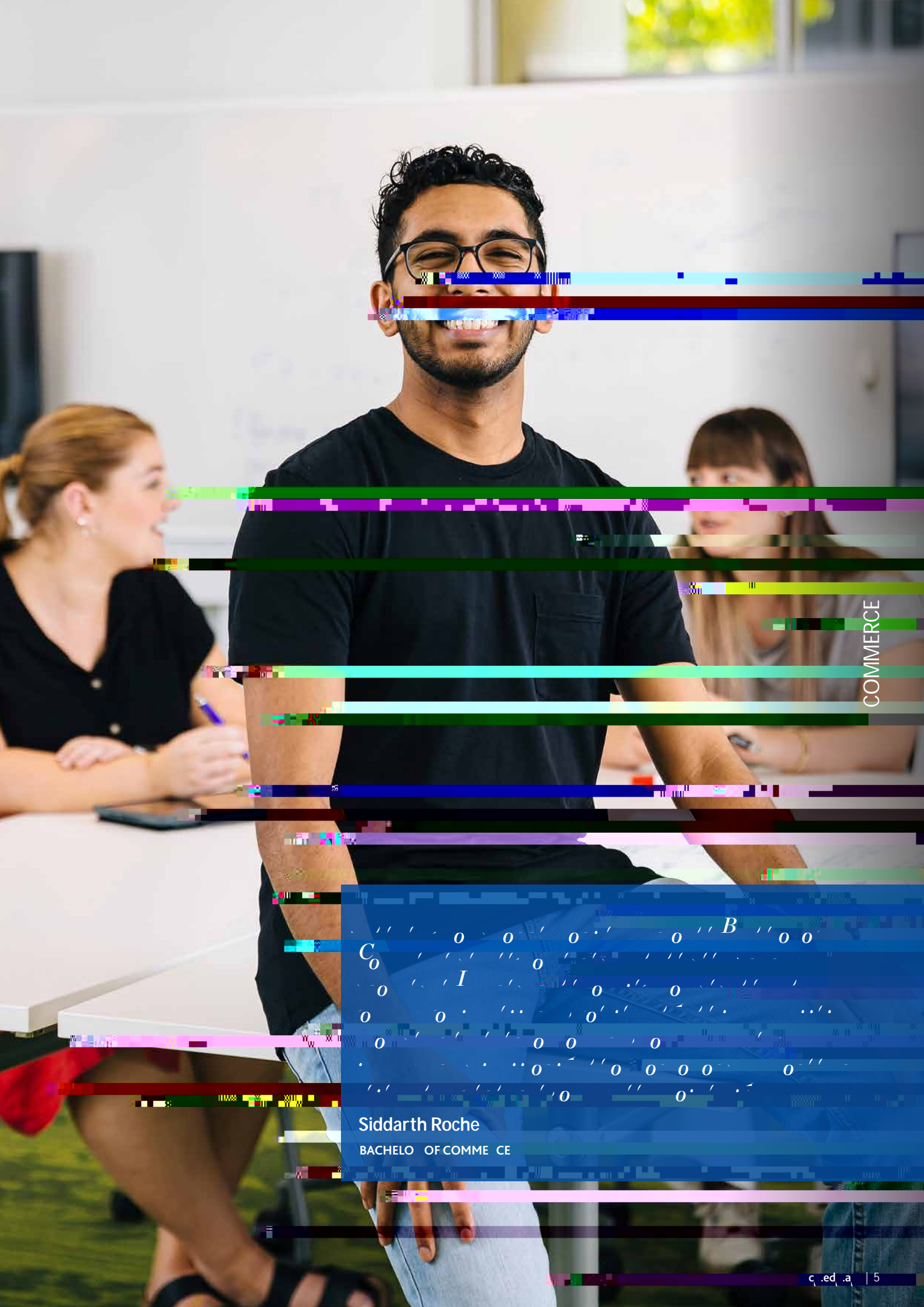
COOK
UNIVERSITY



Ready today for tomorrow



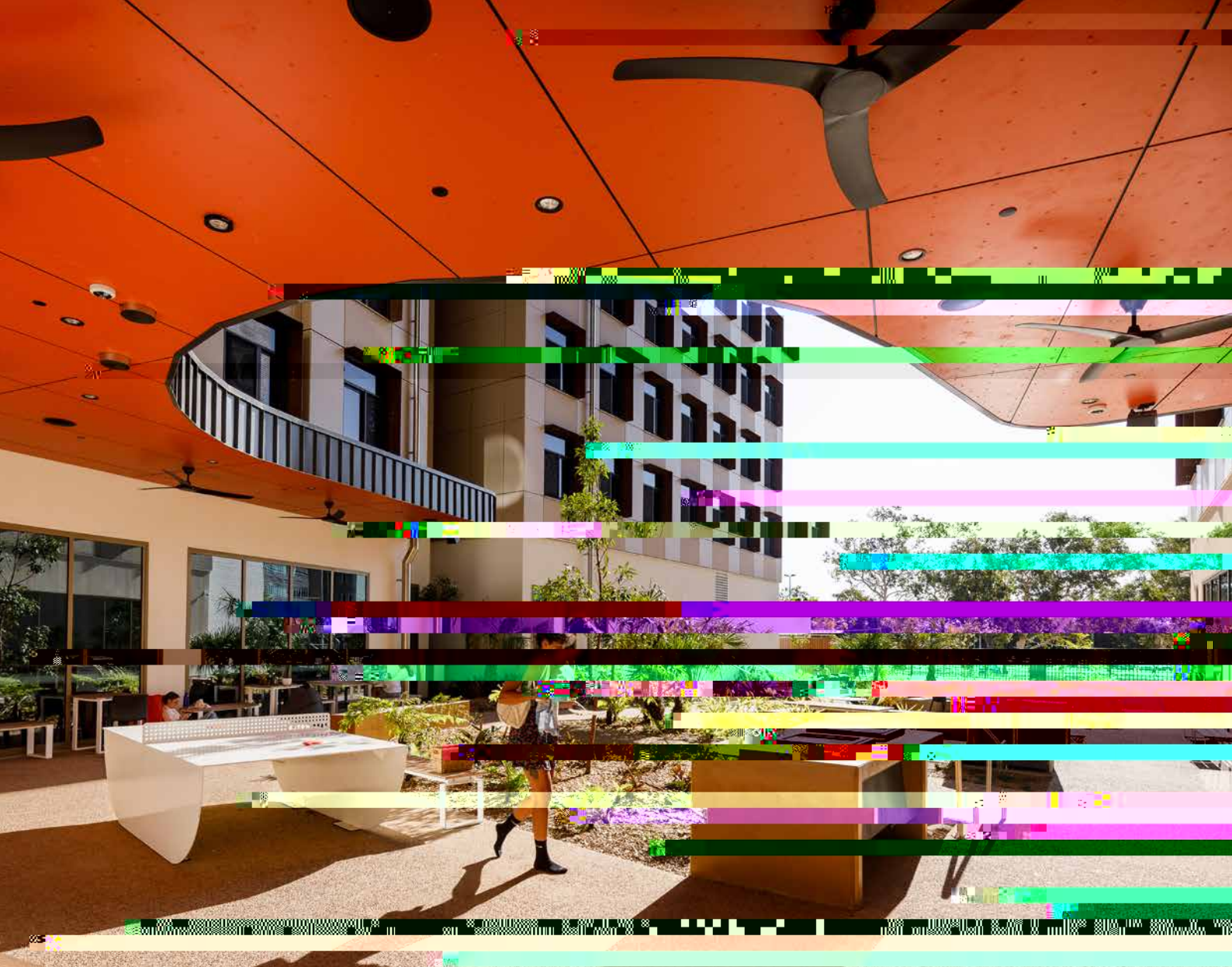
Answer:



COMMERCE

Siddarth Roche
BACHELOR OF COMMERCE





JCU

Study and live in some of the most interesting places in the world. Cairns and Townsville are on the doorstep of the Great Barrier Reef, magnificent rainforests, the savannah region and Outback Australia.

Living on-campus is a great way to make the most of your time at JCU. JCU Townsville, Bebegu Yumba campus, Douglas, has five different accommodation options housing over 1,300 students. JCU Cairns, Nguma-bada campus, Smithfield, features an accommodation complex for 300 students. Living on-campus is a great place to make new friends and immerse yourself in the JCU culture. All rooms at our on-campus residences are single board, with a single bed, study desk, chair, fan, air-conditioning and Wi-Fi. Each residence is different in regards to style of living, culture and atmosphere. There are options for fully catered or self-catered housing. Find out more at jcu.edu.au/accommodation



